



EclDisplay CRMX FC

40W RGB+WW LED Spotlight with Wireless CRMX and wired control, without lens



USER MANUAL

Thank you for choosing PROLIGHTS

Please note that every PROLIGHTS product has been designed in Italy to meet quality and performance requirements for professionals and designed and manufactured for the use and application as shown in this document.

Any other use, if not expressly indicated, could compromise the good condition/operation of the product and/or be a source of danger.

This product is meant for professional use. Therefore, commercial use of this equipment is subject to the respectively applicable national accident prevention rules and regulations.

Features, specifications and appearance are subject to change without notice. Music & Lights S.r.l. and all affiliated companies disclaim liability for any injury, damage, direct or indirect loss, consequential or economic loss or any other loss occasioned by the use of, inability to use or reliance on the information contained in this document.

Product user manual can be downloaded from the website www.prolights.it , or can be inquired to the official PROLIGHTS distributors of your territory (https://www.prolights.it/sales_network.html).

Scanning the below **QR Code**, you will access the download area of the product page, where you can find a broad set of always updated technical documentation: specifications, user manual, technical drawings, photometrics, personalities, fixture firmware updates.



**Visit the download area
of the product page**



The PROLIGHTS Logo, PROLIGHTS names and all other trademark in this document pertaining to PROLIGHTS services or PROLIGHTS product are trademarks OWNED or licensed by Music & Lights S.r.l., its affiliates, and subsidiaries. PROLIGHTS is a registered trademark by Music & Lights S.r.l. All right reserved. Music & Lights – Via A. Olivetti, snc - 04026 - Minturno (LT) ITALY

INDEX

SAFETY INFORMATION	02
1 - PACKAGING	05
PACKAGE CONTENT	05
2 - OPTIONAL ACCESSORIES	05
DEDICATED ACCESSORIES	05
NORDIC ALUMINUM TRACK	05
3 - TECHNICAL DRAWING	06
4 - TILT RANGE	09
5 - INSTALLATION	10
MOUNTING	10
6 - CONNECTION TO THE MAINS SUPPLY	11
CONNECTION TO MAINS VIA TERMINAL BLOCK	12
CONNECTION TO DMX LINE VIA TERMINAL BLOCK	12
7 - START UP	13
CONNECT AND DISCONNECT POWER FROM THE PRODUCT	13
8 - PRODUCT OVERVIEW	13
9 - RDM FUNCTIONS	14
10 - DMX CHARTS	19
11 - ACCESSORIES INSTALLATION	25
OPTICS (CODES ECLDISPWASHL1530 / ECLDISPWASHL2550 / ECLDISPPRZL2040 - OPTIONAL)	25
BARNDOR AND FILTER FRAME (CODE ECLDISPBDNFFB - OPTIONAL)	27
ANTI-GLARE LOUVRE (CODE ECLDISPLOUVRE - OPTIONAL)	28
GOBO HOLDER (CODE ECLDISPGOBOHIND - OPTIONAL)	29
HALF SNOOT, FULL SNOOT (CODES ECLDISPHSNOOT, ECLDISPFSNOOT - OPTIONAL)	30
CEILING ADAPTER KIT (CODES ECLDISPCEILKIT, ECLDISPCEILFLG - OPTIONAL)	31
12 - MAINTENANCE	34
MAINTENANCE AND CLEANING THE PRODUCT	34
VISUAL CHECK OF PRODUCT HOUSING	34
TROUBLESHOOTING	35

SAFETY INFORMATION



WARNING!

- See <https://www.prolights.it/product/ECLDISPLAYCRMXFC#download> for installation instructions.
- Please read carefully the instruction reported in this section before installing, powering, operating or servicing the product and observe the indications also for its future handling.



This unit is not for household and residential use, only professional applications.



Connection to mains supply

- The Connection to the mains supply must be carried out by a qualified electrical installer.
- Use only AC supplies 100-240V 50-60 Hz, the fixture must be electrically connected to ground (earth).
- Select the cable cross section in according with the maximum current draw of the product and the possible number of products connected at the same power line.
- The AC mains power distribution circuit must be equipped with magnetic+residual current circuit breaker protection.
- Do not connect it to a dimmer system; doing so may damage the product.



Protection and Warning against electrical shock

- Do not remove any cover from the product, always disconnect the product from AC power before servicing.
- Ensure that the fixture is electrically connected to ground (earth). And use only a source of AC power that complies with local building and electrical codes and has both overload and ground-fault (earth-fault) protection.
- Before using the fixture, check that all power distribution equipment and cables are in perfect condition and rated for the current requirements of all connected devices.
- Isolate the fixture from power immediately if the power plug or any seal, cover, cable, or other components are damaged, defective, deformed or showing signs of overheating.
- Do not reapply power until repairs have been completed.
- Refer any service operation not described in this manual to PROLIGHTS Service team or an authorized PROLIGHTS service center.



Installation

- Make sure that all visible parts of the product are in good visible condition before its use or installation.
- Make sure the point of anchorage is stable before positioning the projector.
- When suspending the fixture above ground level, secure it against failure of primary attachments by attaching a safety cable that is approved as a safety attachment for the weight of the fixture to the attachment point on the main frame of the product. In case the safety cable, enter in action, it needs to be replaced with a new one.
- Install the product only in well ventilated places.
- For non temporary installations, ensure that the fixture is securely fastened to a load-bearing surface with suitable corrosionresistant hardware.
- For a temporary installation with clamps, ensure that the quarter-turn fastener and/or screws are turned fully, and secured with a suitable safety cable.



Minimum distance of illuminated objects

- The projector needs to be positioned so that the objects hit by the beam of light are at least 0.5 meters (1.64 ft) from the lens of the projector.

T_a 45°C

Max operating ambient temperature (T_a)

- Do not operate the fixture if the ambient temperature (T_a) exceeds 45 °C (113 °F).

T_a -10°C

Minimum operating ambient temperature (T_a)

- Do not operate the fixture if the ambient temperature (T_a) is below -10 °C (14 °F).



Protection from burns and fire

- The exterior of the fixture becomes hot during use. Avoid contact by persons and materials.
- Ensure that there is free and unobstructed airflow around the fixture.
- Keep flammable materials well away from the fixture
- Do not expose the front glass to sunlight or any other strong light source from any angle. Lenses can focus the sun's rays inside the fixture, creating a potential fire hazard.
- Do not attempt to bypass thermostatic switches or fuses.



Indoor use

- This product is designed for indoor and dry environments.
- Do not use in wet location and do not expose the fixture to rain or moisture.
- Never use the fixture in places subject to vibrations or bumps.
- Make certain that no inflammable liquids, water or metal objects enter the fixture.
- Excessive dust, smoke fluid, and particle build up degrades performance, causes overheating and will damage the fixture.
- Damages caused by inadequate cleaning or maintenance are not covered by the product warranty.

T_c 65°C

Temperature of the external surface

- The surface of the fixture can reach up to 65 °C (149 °F) during operation. Avoid contact with people and materials.



Maintenance

- Warning! Disconnect the fixture from AC mains power and allow to cool for at least 10 minutes before handling.
- Only technicians who are authorized by PROLIGHTS or Authorised service partners are permitted to open the fixture.
- Users may carry out external cleaning, following the warnings and instructions provided, but any service operation not described in this manual must be referred to a qualified service technician.
- Important! Excessive dust, smoke fluid, and particle build up degrades performance, causes overheating and will damage the fixture. Damages caused by inadequate cleaning or maintenance is not covered by the product warranty.



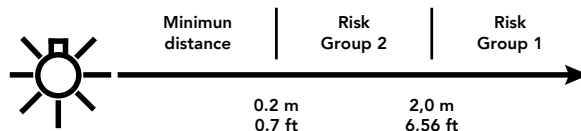
Photobiological safety

- This device emits potentially dangerous optical radiation and is identified in the category of Risk Group 2 according to EN 62471.



Do not stare at the operating light source

- Do not look directly at the LED source during operation. It can be harmful to the eyes and skin.
- During Installation, operation and maintenance, be prepared for the fixture to light and move suddenly when connected to power.
- The device should be positioned so that prolonged staring into the luminaire at a distance closer than 2,0 m (6,56 ft) is not expected.



**Disposal**

- This product is supplied in compliance with European Directive 2012/19/EU – Waste Electrical and Electronic Equipment (WEEE). To preserve the environment please dispose/ recycle this product at the end of its life according to the local regulation.

**The products to which this manual refers comply with:**

- 2014/35/EU - Safety of electrical equipment supplied at low voltage (LVD).
- 2014/30/EU - Electromagnetic Compatibility (EMC).
- 2011/65/EU - Restriction of the use of certain hazardous substances (RoHS).

**FCC Compliance:**

- This device complies with Part 15 of the FCC Rules. Operation is subject to the following two conditions:
 1. This device may not cause harmful interference, and
 2. This device must accept any interference received, including interference that may cause undesired operation.

**Other approvals**

- The product meets the safety requirements of the certification procedures of the market in which it is placed and sold.

1 - PACKAGING

PACKAGE CONTENT

- 1x ECLDISPLAYCRMXFC;
- User Manual.

2 - OPTIONAL ACCESSORIES

DEDICATED ACCESSORIES

Check the updated accessories list, description and informations of the product at the following link:

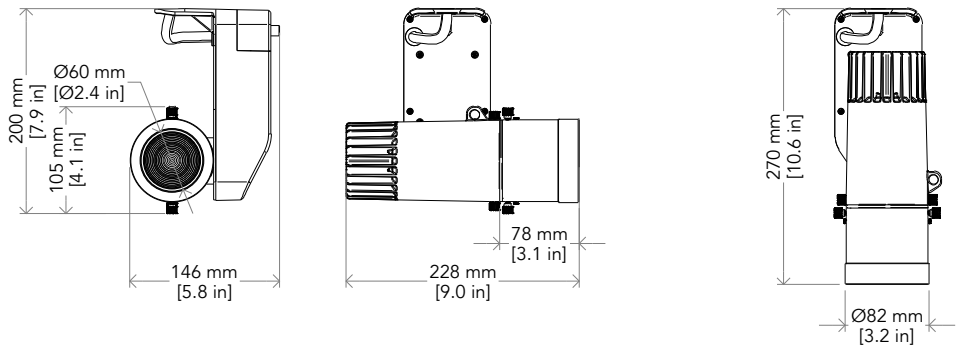
<https://www.prolights.it/product/ECLDISPLAYCRMXFC#accessories>

NORDIC ALUMINUM TRACK

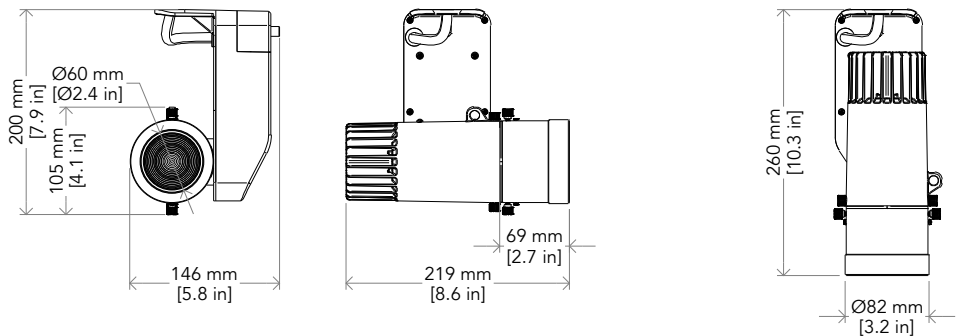
NOTE: the final terms "2" and "3" in the codes indicate the corresponding color variant in black and white respectively.

- NAXTSC61002/3: global Pulse XTSC Lighting Track, 3 circuit DALI, 1000mm, black/white;
- NAXTSC62002/3: global Pulse XTSC Lighting Track, 3 circuit DALI, 2000mm, black/white;
- NAXTSC63002/3: global Pulse XTSC Lighting Track, 3 circuit DALI, 3000mm, black/white;
- NAXTSC64002/3: global Pulse XTSC Lighting Track, 3 circuit DALI, 4000mm, black/white;
- NAXTSC6112/3: global Pulse XTS Connector 3-CCT DALI end feed, earth right, black/white;
- NAXTSC6122/3: global Pulse XTS Connector 3-CCT DALI end feed, earth left, black/white;
- NAXTSC6142/3: global Pulse XTS Connector 3-CCT DALI middle feed, black/white;
- NAXTSC6232/3: global Pulse XTS Connector 3-CCT DALI flexible corner connector, black/white;
- NAXTSNC6342/3: global Pulse XTSN Connector 3-CCT DALI L connector, earth right, black/white;
- NAXTSNC6352/3: global Pulse XTSN Connector 3-CCT DALI L connector, earth left, black/white;
- NAXTSNC6362/3: global Pulse XTSN Connector 3-CCT DALI T connector, earth right/right, black/white;
- NAXTSNC6372/3: global Pulse XTSN Connector 3-CCT DALI T connector, earth left/left, black/white;
- NAXTSNC6382/3: global Pulse XTSN Connector 3-CCT DALI X connector, black/white;
- NAXTSNC6392/3: global Pulse XTSN Connector 3-CCT DALI T connector, earth right/left, black/white;
- NAXTSNC6402/3: Global Pulse XTSN Connector 3-CCT DALI T connector, earth left/right, black/white;
- NAXTS412/3: global Pulse XTS Connector 3-CCT DALI END cap, black/white;
- NASPW12SK215M: global Pulse Track clip wire suspension set 1.5m, 150N, black;
- NASPW12SK25M: global Pulse Track clip wire suspension set 5m, 150N, black;
- NASPW12SK315M: global Pulse Track clip wire suspension set 1.5m, 150N, white;
- NASPW12SK35M: global Pulse Track clip wire suspension set 5m, 150N, white;
- NASKB122/3: global Pulse Track Mounting Clamp for Rod and Wire, 200N, black/white;
- NAXTSC6212/3: global Pulse XTS Connector 3-CCT DALI straight connector, black/white.

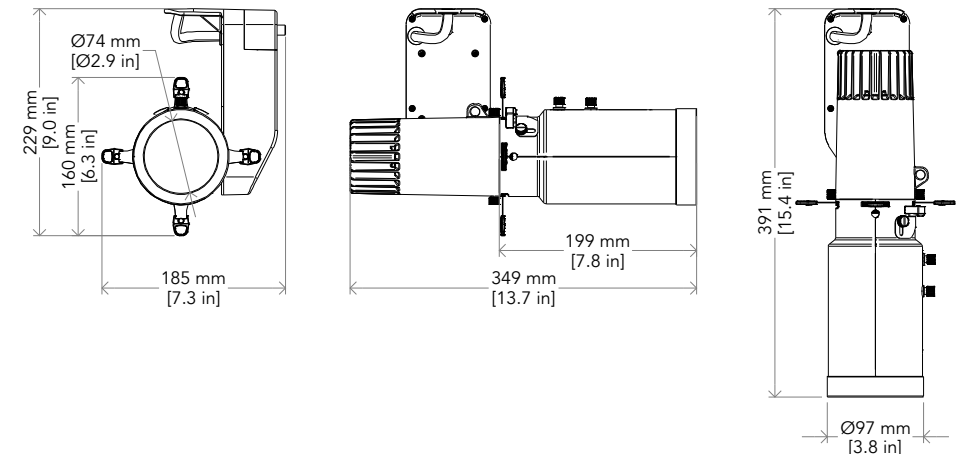
3 - TECHNICAL DRAWING



Weight: 1.79 kg - 3.94 lbs ECLDISPLAYCRMXFC with ECLDISPWASHL1530

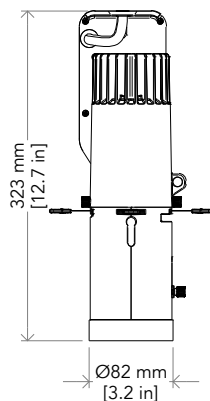
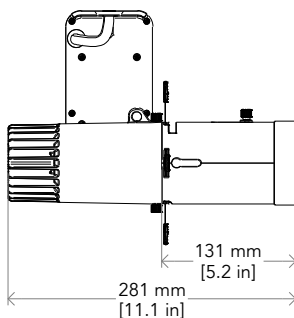
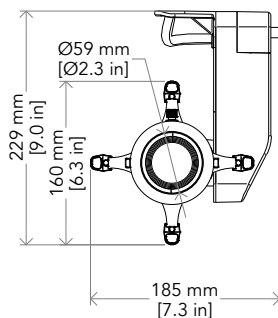


Weight: 1.81 kg - 3.99 lbs ECLDISPLAYCRMXFC with ECLDISPWASHL2550



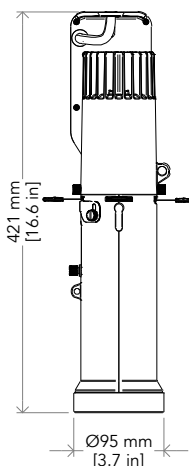
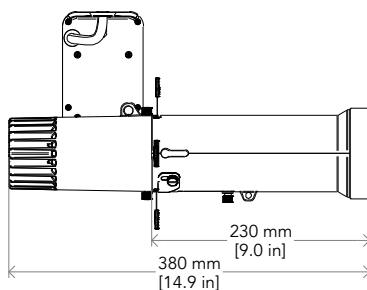
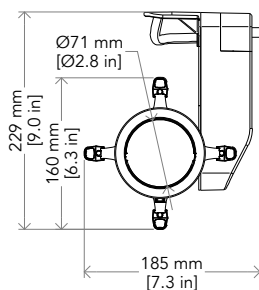
Weight: TBD kg - TBD lbs ECLDISPLAYCRMXFC with ECLDISPPHDZL2040

Fig. 01



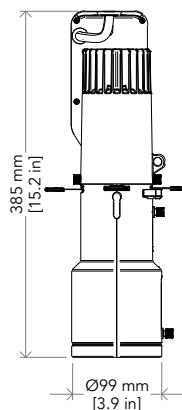
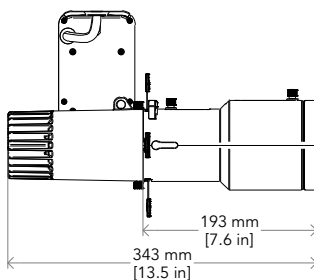
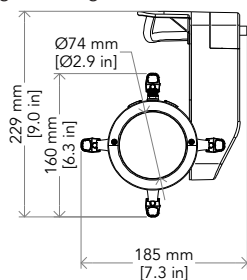
Weight: 2.15 kg - 4.74 lbs

ECLDISPLAYCRMXFC with ECLDISPRHDL18-36-50



Weight: 2.26 kg - 4.98 lbs

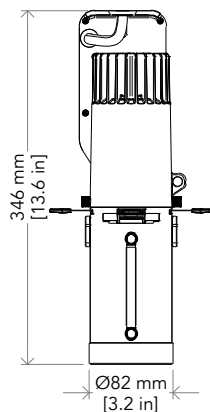
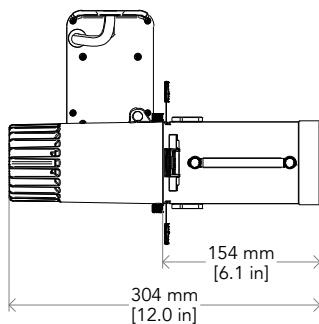
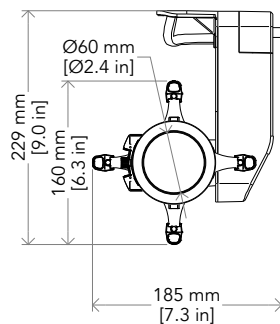
ECLDISPLAYCRMXFC with ECLDISPRPRL08



Weight: 2.19 kg - 4.82 lbs

ECLDISPLAYCRMXFC with ECLDISPRZL1020

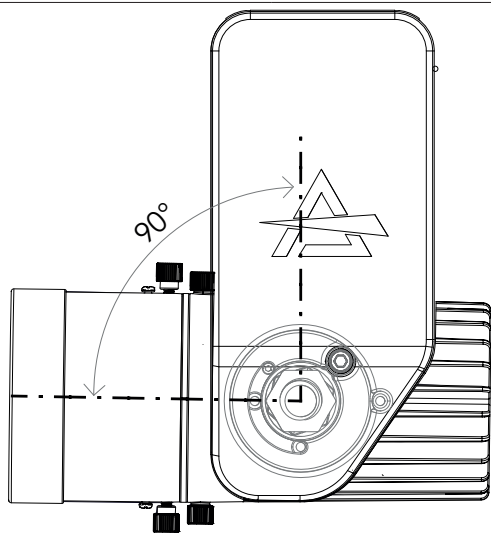
Fig. 02



Weight: 1.99 kg - 4.38 lbs

ECLDISPLAYCRMXFC with ECLDISPPRZL2040

4 - TILT RANGE



TILT RANGE: 135°

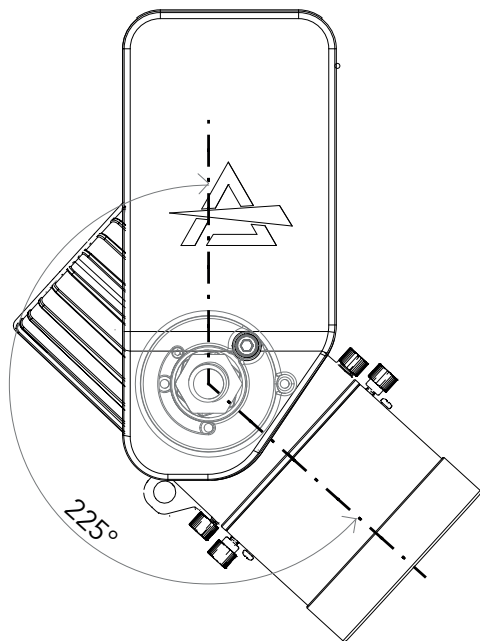


Fig. 03

5 - INSTALLATION

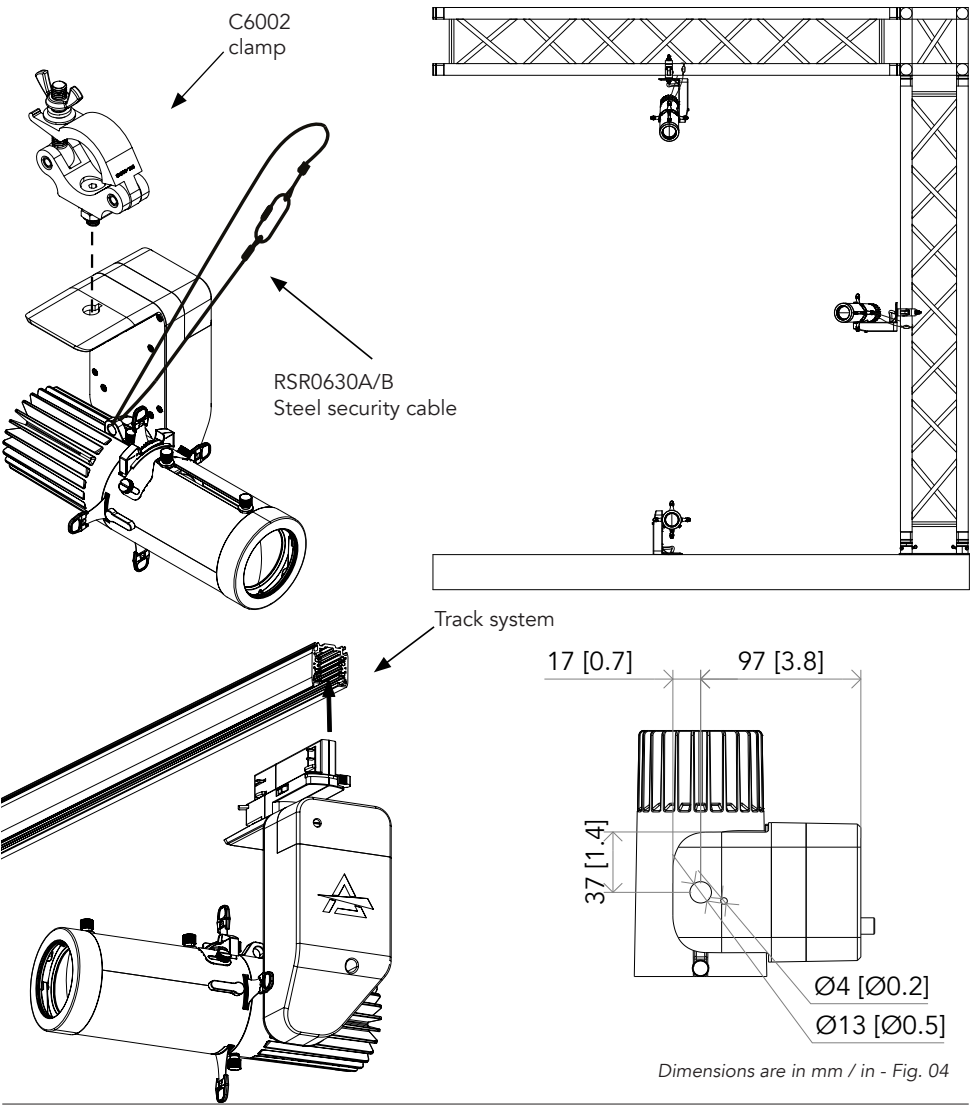
MOUNTING

Check that the supporting structure can safely bear the weight of all installed fixtures, clamps, cables, auxiliary equipment, etc. and complies with locally applicable regulations.

When suspending the fixture above ground level, secure it against failure of primary attachments by attaching a safety wire that is approved as a safety attachment for the weight of the fixture to an anchor point on the product main frame.

Do not use removable parts or weak anchors for secondary attachment.

Warning! When clamping the fixture to a truss or other structure at any angle, use clamps of half-coupler type. Do not use any type of clamp that does not completely encircle the structure when fastened.



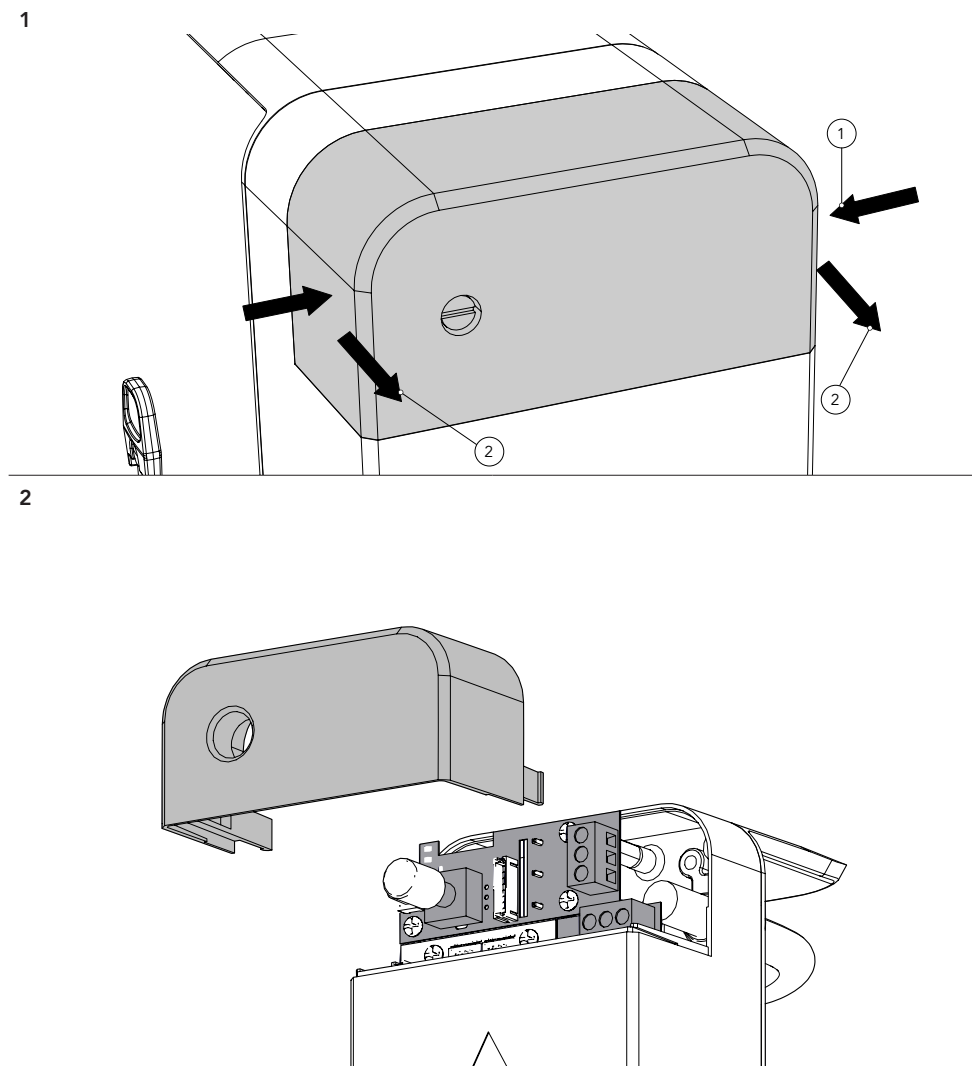
6 - CONNECTION TO THE MAINS SUPPLY

WARNING: For protection from electric shock, the fixture must be earthed!

The product is equipped with auto-switching power supply that automatically adjusts to any 50-60Hz AC power source from 100-240 Volts.

If you need to install a power plug on the power cable to allow connection to power outlets, install a grounding-type (earthed) plug, following the plug manufacturer's instructions. If you have any doubts about proper installation, consult a qualified electrician.

The max power consumption is 35W.



Remove the plastic cover to access the screw terminal blocks.

Fig. 06

CONNECTION TO MAINS VIA TERMINAL BLOCK

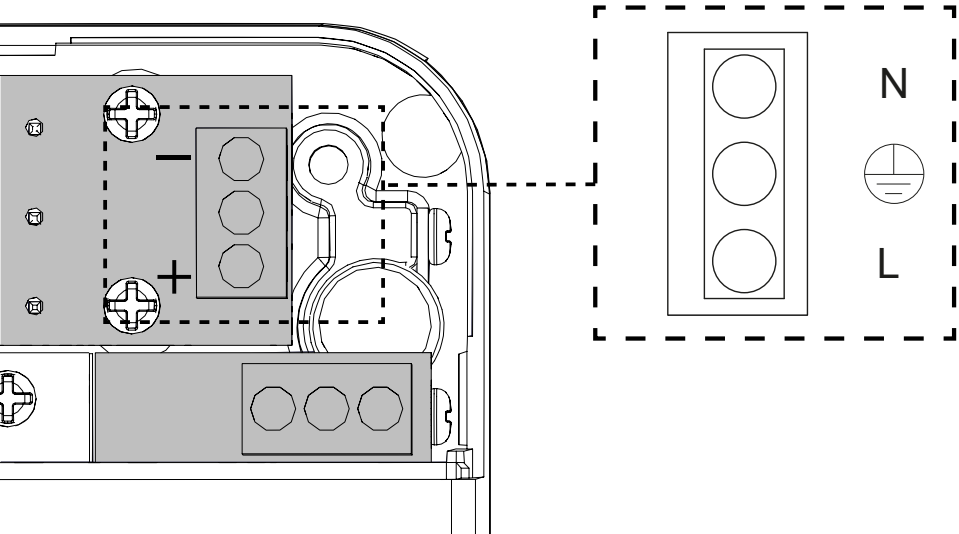


Fig. 07

CONNECTION TO DMX LINE VIA TERMINAL BLOCK

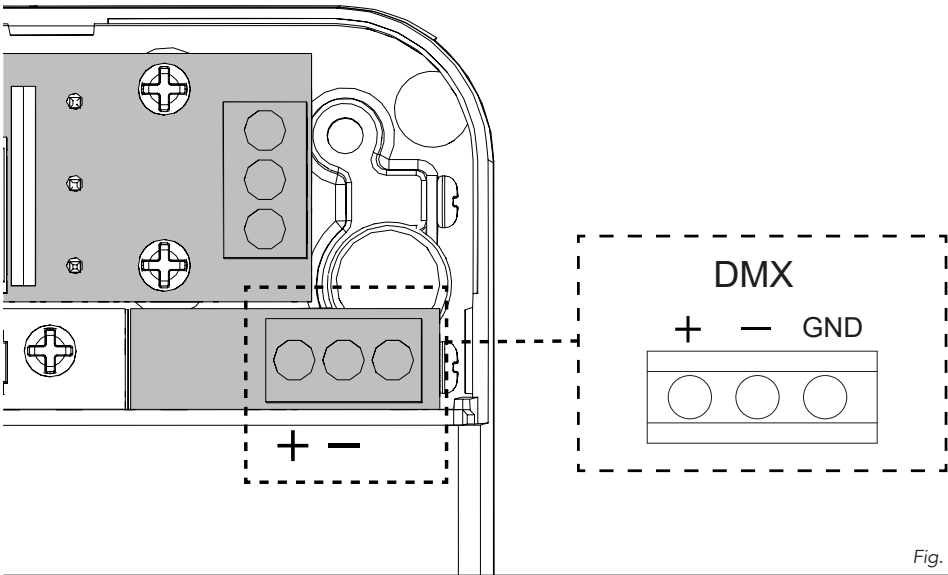


Fig. 08

7 - START UP

CONNECT AND DISCONNECT POWER FROM THE PRODUCT

To apply and disconnect power to the product:

- Check that the product is installed and secured as indicated in the Safety Informations, and that personal safety will not be put at risk when the fixture lights up.
- Connect the external led driver to the mains line.
- The product is then ready for its operations and can be controlled through the available input signals on led driver.
- To disconnect power from the product, disconnect the mains from the socket.

8 - PRODUCT OVERVIEW

1. SAFETY EYE to attach safety cable;
2. KNOB for releasing and locking the optic;
3. KNOB for adjusting zoom and focus;
4. OPTIC (accessory not included, in the figure ECLDISPWASHL1530);
5. RUBBER RING (accessory included in the box optic);
6. KNOB for adjusting dimmer or CCT (only VW version);
7. REMOVABLE PLASTIC COVER to access to the screw terminal blocks;
8. PLASTIC ARM COVER;
9. LOCK TILT.

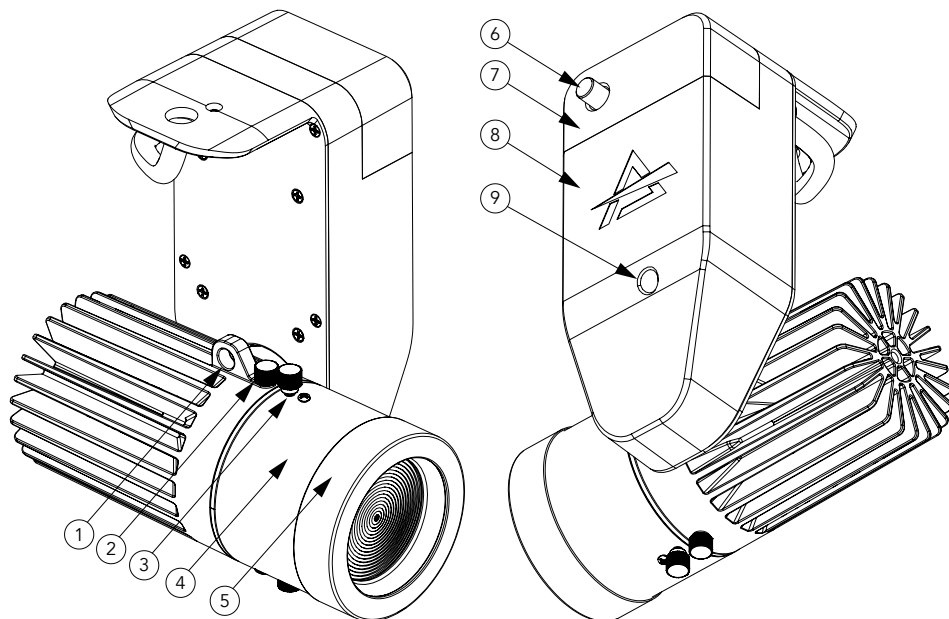


Fig. 09

9 - RDM FUNCTIONS

The product can communicate using RDM (Remote Device Management) protocol over a DMX512 Networks.

RDM is a bi-directional communications protocol for use in DMX512 control systems, it is the open standard for DMX512 device configuration and status monitoring.

The RDM protocol allows data packets to be inserted into a DMX512 data stream without affecting existing non-RDM equipment. It allows a console or dedicated RDM controller to send commands to and receive messages from specific fixtures.

Product	Model ID	Mode IDs
ECLDISPLAYCRMXFC	D156	BASIC: 5
		STANDARD: 6
		EXTENDED: 15
		BASIC 16 BIT: 10

The PIDs in the following tables are supported in the product.

Category	Parameter	Value	GET	SET
Product Information	SUPPORTED_PARAMETERS	0x0050	x	
	PARAMETER_DESCRIPTION	0x0051	x	
	PRODUCT_DETAIL_ID_LIST	0x0070	x	
	DEVICE_MODEL_DESCRIPTION	0x0080	x	
	MANUFACTURER_LABEL	0x0081	x	
	DEVICE_LABEL	0x0082	x	x
	FACTORY_DEFAULTS	0x0090	x	x
DMX512 Setup	DMX_PERSONALITY	0x00E0	x	x
	DMX_PERSONALITY_DESCRIPTION	0x00E1	x	
	DMX_START_ADDRESS	0x00F0	x	x
	SLOT_INFO	0x0120	x	
	SLOT_DESCRIPTION	0x0121	x	
	DEFAULT_SLOT_VALUE	0x0122	x	
Sensors	SENSOR_DEFINITION	0x0200	x	
	SENSOR_VALUE	0x0201	x	x
Dimmer Settings	DIMMER_INFO	0x0340	x	
	CURVE	0x0343	x	x
	CURVE_DESCRIPTION	0x0344	x	x
	OUTPUT_RESPONSE_TIME	0x0345	x	x
	OUTPUT_RESPONSE_TIME_DESCRIPTION	0x0346	x	
	MODULATION_FREQUENCY	0x0347	x	x
	MODULATION_FREQUENCY_DESCRIPTION	0x0348	x	
Power/Lamp Settings	DEVICE_HOURS	0x0400	x	x
	LAMP_HOURS	0x0401	x	x
	LAMP_STRIKES	0x0402	x	x
	LAMP_STATE	0x0403	x	x
	LAMP_MODE	0x0404	x	x
	DEVICE_POWER_CYCLES	0x0405	x	x
Control	IDENTIFY_MODE	0x1040	x	x

Manufacturer Specific PIDs

Parameter	PID	GET	SET	Value	Description
DMX FAULT	0x82DD	x	x	0-2	0: Blackout 1: Hold 2: Stand Alone
MASTER/SLAVE	0x8211	x	x	0-2	0: Master DMX 1: Master NO DMX 2: Slave
STANDALONE MODE	0x82EC	x	x	0-4	0: Static 1: Color Macro 2: CCT 3: White Presets 4: Manual Color
STATIC COLORS	0x82BE	x	x	0-14	0: R 1: G 2: B 3: W 4: GB 5: RB 6: RG 7: RGB 8: RW 9: GW 10: BW 11: RGW 12: RBW 13: GBW 14: RGBW
CCT	0x8346	x	x	0-255	Default: 99
WHITE PRESETS	0x82BF	x	x	0-20	<i>See pag.17</i>
COLOR MACRO	0x82ED	x	x	0-66	<i>See pag.22</i>
MANUAL RED	0x82C0	x	x	0-255	Default: 255
MANUAL GREEN	0x82C1	x	x	0-255	Default: 255
MANUAL BLUE	0x82C2	x	x	0-255	Default: 255
MANUAL WARM WHITE	0x82C3	x	x	0-255	Default: 255
FULL ON	0x8217	x	x	0-1	0: HB Mode 1: Studio Mode
STUDIO RED	0x82C9	x	x	125-255	Default: 255
STUDIO GREEN	0x82CA	x	x	125-255	Default: 255
STUDIO BLUE	0x82CB	x	x	125-255	Default: 255
STUDIO WARM WHITE	0x82CC	x	x	125-255	Default: 255
WHITE CALIBRATION RED	0x8200	x	x	125-255	Default: 255
WHITE CALIBRATION GREEN	0x8201	x	x	125-255	Default: 255
WHITE CALIBRATION BLUE	0x8202	x	x	125-255	Default: 255
WHITE CALIBRATION WHITE	0x8203	x	x	125-255	Default: 255
CURRENT HOURS	0x82C5	x		0-65535	
POWER CONSUMPTION (AC 220V)	0x82DE	x			
MAINTENANCE TIME:ALERT PERIOD	0x82DF	x	x	10-300	Default: 300
MAINTENANCE TIME:ELAPSED TIME	0x82E0	x	x	0-255	
CLEAN ALL DATA	0x82C8	x	x	0-1	0: No 1: Yes
WIRELESS	0x8212	x	x	0-1	0: No 1: Yes
WIRELESS RESET	0x8215	x	x	0-1	0: No 1: Yes
ERROR MESSAGES	0x82EA	x		0-2	0: No error 1: Temperature too high 2: LED temperature sensor error

NOTE: the terms shown in **BOLD** indicates the default settings.

N°	MENU	LEVEL 1	LEVEL 2	LEVEL 3	DESCRIPTION
1	DMX ADDRESS	001 - 512			Set address used for Fixture
2	WIRELESS	OFF			Enable/Disable the wireless card.
		ON			
3	DMX MODE	BASIC			Set DMX chart for Main Fixture.
		STANDARD			
		EXTENDED			
		BASIC 16 BIT			
4	DIMMER CURVE	LINEAR			Select the dimmer curve.
		S-CURVE			
		SQUARE LAW			
		INVERSE SQUARE LAW			
5	DIMMER SPEED	AUTO			Select the dimmer speed.
		FAST			
		MEDIUM			
		SLOW			
6	LED FREQUENCY	600 Hz			Select LED PWM frequency.
		1200 Hz			
		2000 Hz			
		4000 Hz			
		6000 Hz			
		25 kHz			
7	DMX FAULT	BLACKOUT			Define the behaviour of fixture in case of DMX signal lost.
		HOLD			
		STAND ALONE			
8	SPECIFIC PIDS	OFF			Check RDM Section.
		RED	125-255		
		GREEN	125-255		
		BLUE	125-255		
		WARM WHITE	125-255		
		STUDIO RED	125-255		
		STUDIO GREEN	125-255		
		STUDIO BLUE	125-255		
		STUDIO WARM WHITE	125-255		
9	INFORMATIONS	DEVICE TIME	FIXTURE HOURS	(READ AND RESET)	To check the total working hours of the unit.
			CURRENT HOURS	(READ AND RESET)	To check the current working hours of the unit.
			SOURCE HOURS	(READ AND RESET)	To see the total operating hours of the LED source.
			POWER ON CYCLE	(READ AND RESET)	To see the power cycles of the machine.

N°	MENU	LEVEL 1	LEVEL 2	LEVEL 3	DESCRIPTION	
			MAINTENANCE TIME	ELAPSED TIME	To choose and reset unit maintenance warning hours.	
				ALERT PERIOD		
		POWER CONSUMPTION				Show actual power consumption.
		SOFTWARE VERSION				View informations about software version.
		DEVICE INFO				
		DEVICE LABEL				
		RDM UID				View ID for the RDM control.
10	STAND ALONE	MASTER/SLAVE	MASTER DMX		Allow you to link and operating in synk multiple units without a DMX console. Choose a unit to perform as the Master. This unit must be the first unit in line; Set the successive units to be slave.	
			MASTER NO DMX			
			SLAVE			
		STATIC COLORS	R	0 - 255		
			G	0 - 255		
			B	0 - 255		
			W	0 - 255		
			GB	0 - 255		
			RB	0 - 255		
			RG	0 - 255		
			RGB	0 - 255		
			RW	0 - 255		
			GW	0 - 255		
			BW	0 - 255		
			RGW	0 - 255		
			RBW	0 - 255		
			GBW	0 - 255		
			RGBW	0 - 255		
		CCT	2800K	0 - 255		
			3000K	0 - 255		
			3200K	0 - 255		
			3400K	0 - 255		
			3600K	0 - 255		
			3800K	0 - 255		
			4000K	0 - 255		
			4200K	0 - 255		
			4400K	0 - 255		
			4600K	0 - 255		
			4800K	0 - 255		
			5000K	0 - 255		
			5200K	0 - 255		

N°	MENU	LEVEL 1	LEVEL 2	LEVEL 3	DESCRIPTION
			5400K	0 - 255	
			5600K	0 - 255	
			6000K	0 - 255	
			6500K	0 - 255	
			7000K	0 - 255	
			8000K	0 - 255	
			9000K	0 - 255	
			10000K	0 - 255	
		MANUAL	RED	0 - 255	
			GREEN	0 - 255	
			BLUE	0 - 255	
			WARM WHITE	0 - 255	
11	FACTORY DEFAULT	-			

10 - DMX CHARTS

RDM Personality ID List

ID	DMX Mode	Footprint
1	BASIC	5CH
2	STANDARD	6CH
3	EXTENDED	15CH
4	BASIC 16 BIT	10CH

PARAMETER	MODE			
	BASIC	STANDARD	EXTENDED	BASIC 16 BIT
DIMMER	1	1	1	1
DIMMER FINE		2	2	2
STROBE		3	3	
CCT		4	4	
CROSSFADE		5	5	
RED	2		6	3
RED FINE			7	4
GREEN	3		8	5
GREEN FINE			9	6
BLUE	4		10	7
BLUE FINE			11	8
WARM WHITE	5		12	9
WARM WHITE FINE			13	10
COLOR MACRO		6	14	
CONTROL			15	

Dimmer					
Function	8 bit value		16 bit value		Note
	From	To	From	To	
Dimmer	0	255	0	65535	Default @ 0

Function	Strobe				Note
	8 bit value		16 bit value		
	From	To	From	To	
Open	0	1	-	-	Default @ 255
Strobe from Slow to Fast	2	62	-	-	
Open	63	64	-	-	
Pulse In from slow to fast	65	125	-	-	
Close	126	127	-	-	
Pulse Out from slow to fast	128	188	-	-	
Open	189	190	-	-	
Random from slow to fast	191	251	-	-	
Open	252	255	-	-	

CCT						
Function		8 bit value		16 bit value		Note
From	To	From	To	From	To	
2800	2900	0	4	0	910	Default @ 0
2900	3000	4	7	910	1820	
3000	3100	7	11	1820	2731	
3100	3200	11	14	2731	3641	
3200	3300	14	18	3641	4551	
3300	3400	18	21	4551	5461	
3400	3500	21	25	5461	6371	
3500	3600	25	28	6371	7282	
3600	3700	28	32	7282	8192	
3700	3800	32	35	8192	9102	
3800	3900	35	39	9102	10012	
3900	4000	39	43	10012	10923	
4000	4100	43	46	10923	11833	
4100	4200	46	50	11833	12743	
4200	4300	50	53	12743	13653	
4300	4400	53	57	13653	14563	
4400	4500	57	60	14563	15474	
4500	4600	60	64	15474	16384	
4600	4700	64	67	16384	17294	
4700	4800	67	71	17294	18204	
4800	4900	71	74	18204	19114	
4900	5000	74	78	19114	20025	
5000	5100	78	81	20025	20935	
5100	5200	81	85	20935	21845	
5200	5300	85	89	21845	22755	
5300	5400	89	92	22755	23665	
5400	5500	92	96	23665	24576	
5500	5600	96	99	24576	25486	
5600	5700	99	103	25486	26396	
5700	5800	103	106	26396	27306	
5800	5900	106	110	27306	28216	
5900	6000	110	113	28216	29127	
6000	6100	113	117	29127	30037	
6100	6200	117	120	30037	30947	
6200	6300	120	124	30947	31857	
6300	6400	124	128	31857	32768	
6400	6500	128	131	32768	33678	
6500	6600	131	135	33678	34588	
6600	6700	135	138	34588	35498	
6700	6800	138	142	35498	36408	
6800	6900	142	145	36408	37319	
6900	7000	145	149	37319	38229	
7000	7100	149	152	38229	39139	
7100	7200	152	156	39139	40049	
7200	7300	156	159	40049	40959	
7300	7400	159	163	40959	41870	
7400	7500	163	166	41870	42780	
7500	7600	166	170	42780	43690	
7600	7700	170	174	43690	44600	
7700	7800	174	177	44600	45510	
7800	7900	177	181	45510	46421	

7900	8000	181	184	46421	47331
8000	8100	184	188	47331	48241
8100	8200	188	191	48241	49151
8200	8300	191	195	49151	50061
8300	8400	195	198	50061	50972
8400	8500	198	202	50972	51882
8500	8600	202	205	51882	52792
8600	8700	205	209	52792	53702
8700	8800	209	213	53702	54613
8800	8900	213	216	54613	55523
8900	9000	216	220	55523	56433
9000	9100	220	223	56433	57343
9100	9200	223	227	57343	58253
9200	9300	227	230	58253	59164
9300	9400	230	234	59164	60074
9400	9500	234	237	60074	60984
9500	9600	237	241	60984	61894
9600	9700	241	244	61894	62804
9700	9800	244	248	62804	63715
9800	9900	248	251	63715	64625
9900	10000	251	255	64625	65535

Crossfade from CCT to Color					
Function	8 bit value		16 bit value		Note
	From	To	From	To	
Linear crossfade	0	255	0	65535	Default @ 255 / 65535

Red					
Function	8 bit value		16 bit value		Note
	From	To	From	To	
0 - 100%	0	255	0	65535	Default @ 255 / 65535

Green					
Function	8 bit value		16 bit value		Note
	From	To	From	To	
0 - 100%	0	255	0	65535	Default @ 255 / 65535

Blue					
Function	8 bit value		16 bit value		Note
	From	To	From	To	
0 - 100%	0	255	0	65535	Default @ 255 / 65535

Warm White					
Function	8 bit value		16 bit value		Note
	From	To	From	To	
0 - 100%	0	255	0	65535	Default @ 255 / 65535

Color Macro					
Function	8 bit value		16 bit value		Note
	From	To	From	To	
No Function	0	1	-	-	Default @ 255 Hold 3s to take function
Red	2	3	-	-	
Green	4	5	-	-	
Blue	6	7	-	-	
Cyan	8	9	-	-	
Magenta	10	11	-	-	
Yellow	12	13	-	-	
Dirty White	14	15	-	-	
Alice Blue	16	17	-	-	
Congo Blue	18	19	-	-	
Dark Steel Blue	20	21	-	-	
Deep Lavender	22	23	-	-	
Lilac Ting	24	25	-	-	
Daylight Blue	26	27	-	-	
Flame Red	28	29	-	-	
Bastard Amber	30	31	-	-	
Deep Orange	32	33	-	-	
Pale Gold	34	35	-	-	
Apricot	36	37	-	-	
Bright Blue	38	39	-	-	
Primary Green	40	41	-	-	
Special Lavender	42	43	-	-	
Pale Lavender	44	45	-	-	
Deep Golden Amber	46	47	-	-	
Medium Blue	48	49	-	-	
Bright Pink	50	51	-	-	
Mauve	52	53	-	-	
Dark Green	54	55	-	-	
Lee Green	56	57	-	-	
Dark Blue	58	59	-	-	
Light Blue	60	61	-	-	
Steel Blue	62	63	-	-	
Medium Blue-Green	64	65	-	-	
Peacock Blue	66	67	-	-	
Magenta	68	69	-	-	
Dark Pink	70	71	-	-	
Middle Rose	72	73	-	-	
Light Salmon	74	75	-	-	
English Rose	76	77	-	-	
Light Rose	78	79	-	-	
Orange	80	81	-	-	
Deep Amber	82	83	-	-	
Straw	84	85	-	-	
Light Amber	86	87	-	-	
Spring Yellow	88	89	-	-	
Dark Yellow Green	90	91	-	-	
Just Blue	92	93	-	-	
Sky Blue	94	95	-	-	
Lavender	96	97	-	-	
Light Lavender	98	99	-	-	
Pink Carnation	100	101	-	-	

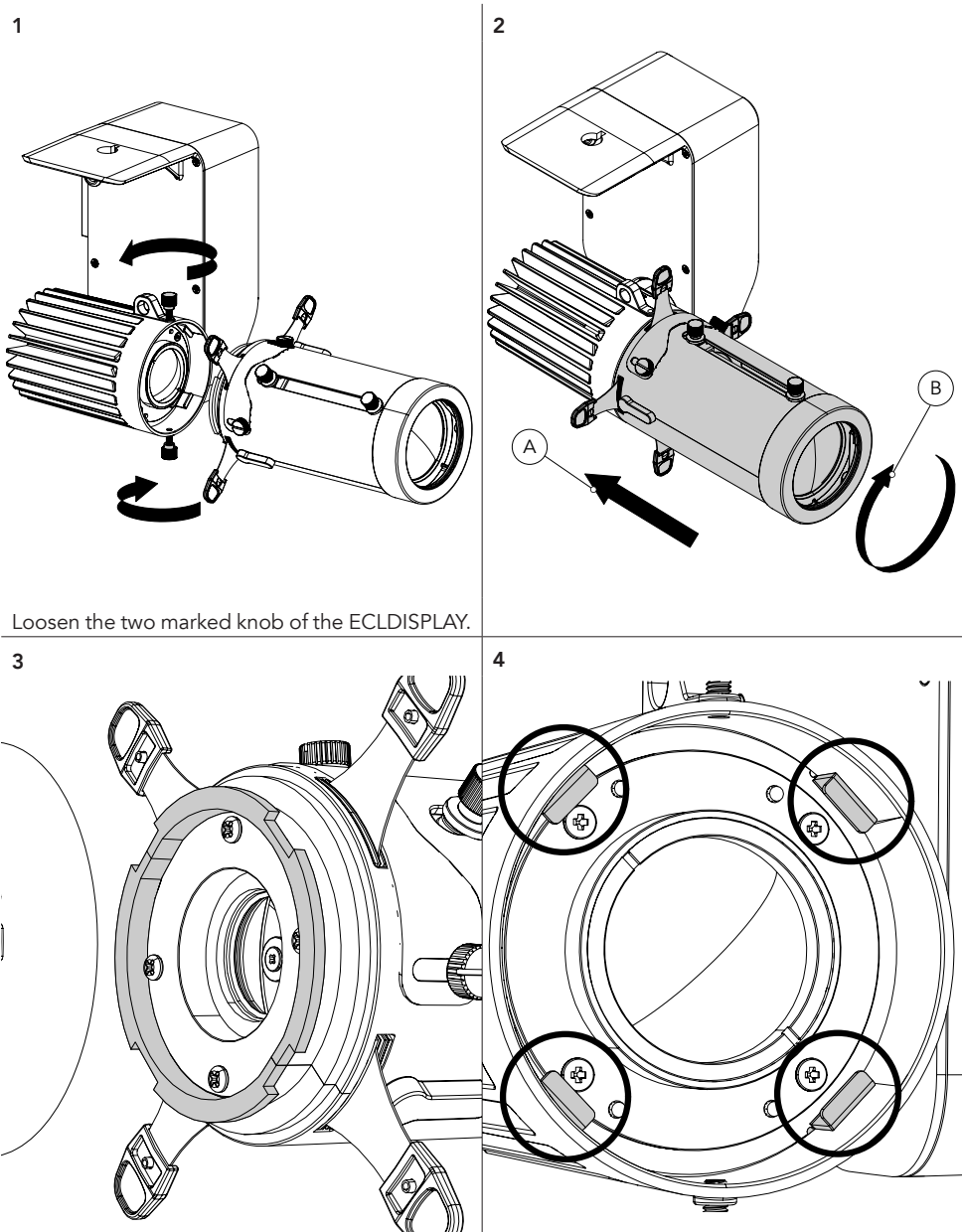
Medium Pink	102	103	-	-	
Light Pink	104	105	-	-	
Sunset Red	106	107	-	-	
Dark Amber	108	109	-	-	
Gold Amber	110	111	-	-	
Medium Amber	112	113	-	-	
Fire	114	115	-	-	
Surprise Peach	116	117	-	-	
Straw Tint	118	119	-	-	
Medium Yellow	120	121	-	-	
Lee Minus Green	122	123	-	-	
Pale Gold	124	125	-	-	
Orange	126	127	-	-	
Deep Straw	128	129	-	-	
Rose Purple	130	131	-	-	
Deep Purple	132	133	-	-	
Soft Green	134	135	-	-	
Reserved	136	211	-	-	
2800K	212	213	-	-	
3000K	214	215	-	-	
3200K	216	217	-	-	
3400K	218	219	-	-	
3600K	220	221	-	-	
3800K	222	223	-	-	
4000K	224	225	-	-	
4200K	226	227	-	-	
4400K	228	229	-	-	
4600K	230	231	-	-	
4800K	232	233	-	-	
5000K	234	235	-	-	
5200K	236	237	-	-	
5400K	238	239	-	-	
5600K	240	241	-	-	
6000K	242	243	-	-	
6500K	244	245	-	-	
7000K	246	247	-	-	
8000K	248	249	-	-	
9000K	250	251	-	-	
10000K	252	253	-	-	
Full ON	254	255	-	-	

Control					
Function	8 bit value		16 bit value		Note
	From	To	From	To	
No Functon	0	1	-	-	Default @ 0 Hold 3s to take function
DIMMER CURVE LINEAR	2	3	-	-	
DIMMER CURVE S-CURVE	4	5	-	-	
DIMMER CURVE SQUARE LAW	6	7	-	-	
DIMMER CURVE INVERSE SQUARE LAW	8	9	-	-	
DIMMER SPEED AUTO	10	11	-	-	
DIMMER SPEED FAST	12	13	-	-	
DIMMER SPEED MEDIUM	14	15	-	-	
DIMMER SPEED SLOW	16	17	-	-	
LED FREQUENCY 600HZ	18	19	-	-	
LED FREQUENCY 1200HZ	20	21	-	-	
LED FREQUENCY 2000HZ	22	23	-	-	
LED FREQUENCY 4000HZ	24	25	-	-	
LED FREQUENCY 6000HZ	26	27	-	-	
LED FREQUENCY 25KHZ	28	29	-	-	
STAND ALONE MASTER DMX	30	31	-	-	
STAND ALONE MASTER NO DMX	32	33	-	-	
STAND ALONE SLAVE	34	35	-	-	
DMX FAULT HOLD	36	37	-	-	
DMX FAULT BLACKOUT	38	39	-	-	
DMX FAULT STAND ALONE	40	41	-	-	
Reserved	42	251	-	-	
FACTORY DEFAULT OF CONTROL FUNCTIONS	252	253	-	-	
Reserved	254	255	-	-	

11 - ACCESSORIES INSTALLATION

OPTICS (CODES ECLDISPWASHL1530 / ECLDISPWASHL2550 / ECLDISPRZL2040 - OPTIONAL)

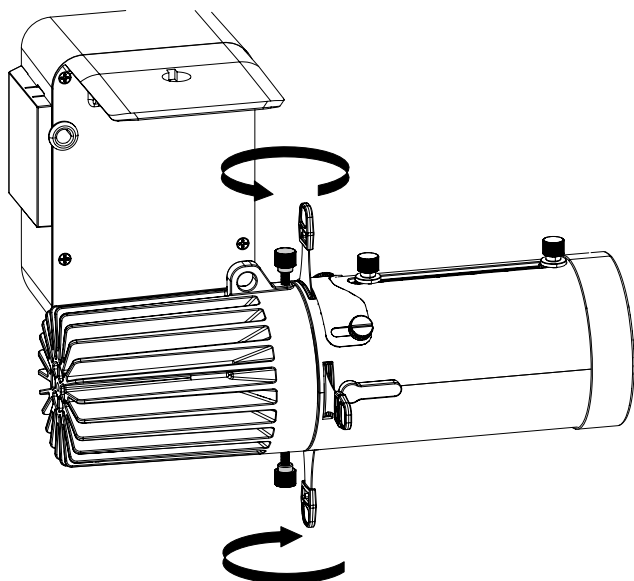
NOTE: the mounting procedure described below is the same for all lenses.



Loosen the two marked knob of the ECLDISPLAY.

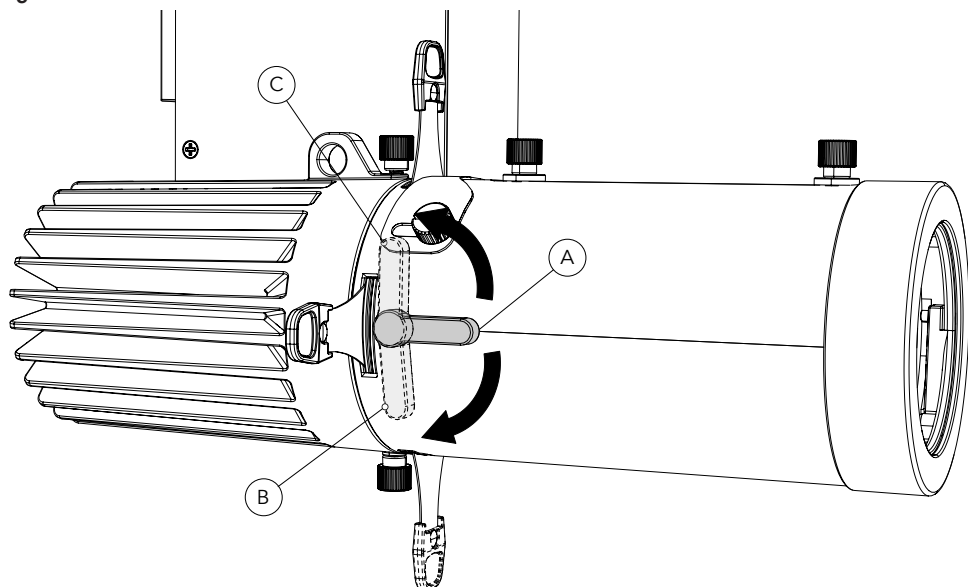
Insert the optic (2-A) and rotate it (2-B) so the marked grooves (3) of the optic coincides with the four marked flaps of the unit (4).

4



Loosen the two marked knobs on the top and lower of the ECLDISPLAY to rotate the optics.

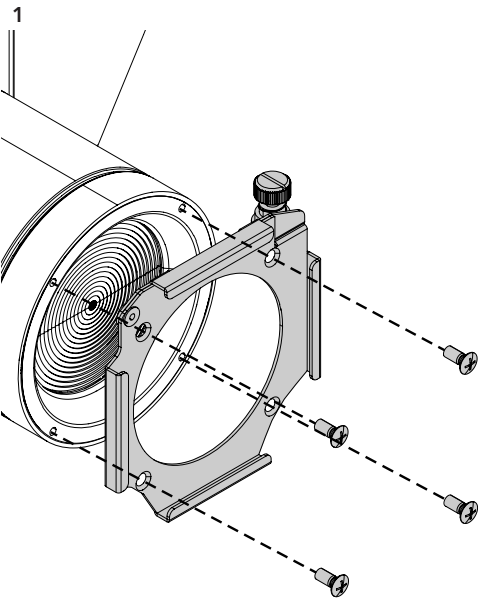
5



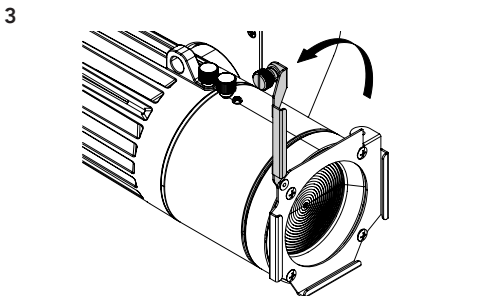
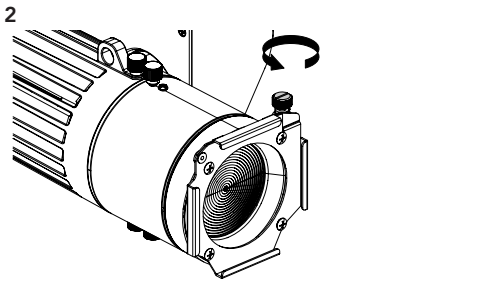
The marked lever in position A allows the locking of the blades.
Rotating the lever to position B or C allows the release of the blades.
This operation must be repeated for both levers on the frame system.

Fig. 10

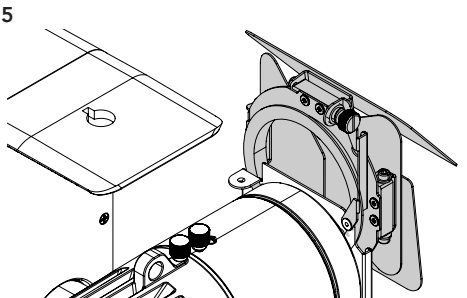
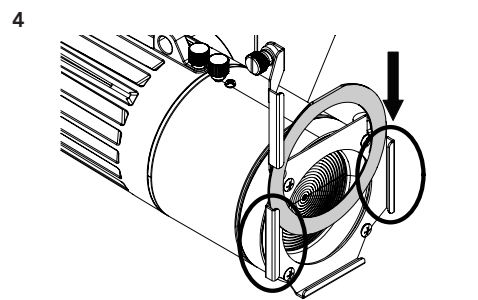
BARNDOOR AND FILTER FRAME (CODE ECLDISPBDNFFB - OPTIONAL)



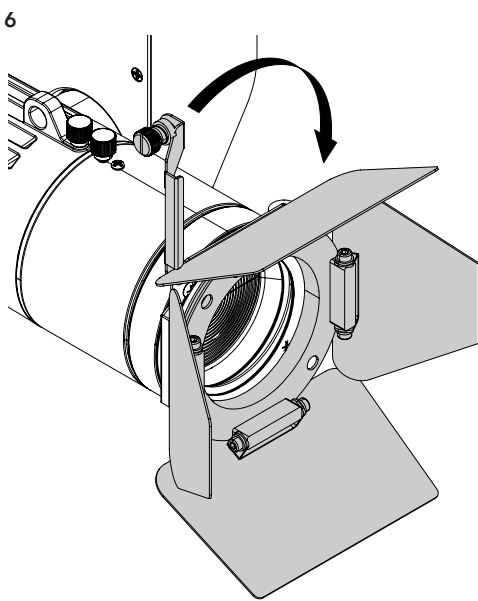
Insert the filter frame mounting the four marked screws into the holes provided on the optic.



Rotate the marked knob of the filter frame (2) and move the marked rod upwards (3).



Insert the holder from above through the track (4). Then insert the barn door (5).

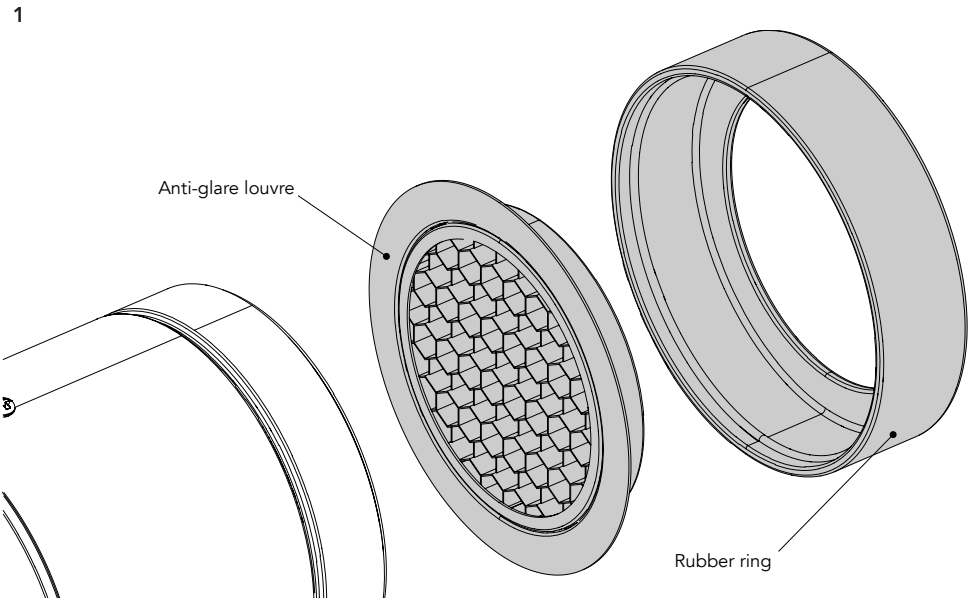


Move the marked rod down (6).

Fig. 11

ANTI-GLARE LOUVRE (CODE ECLDISPLOUVRE - OPTIONAL)

NOTE: the rubber ring can also be used to fix a filter with a maximum diameter of 79 mm.



Insert the anti-glare louvre or a filter of maximum size of Ø79 mm into the rubber ring.

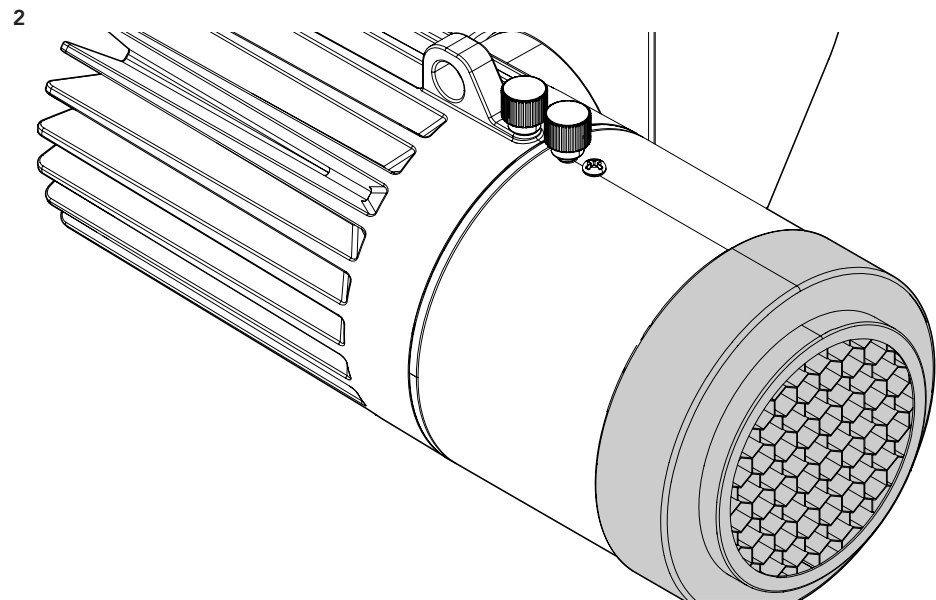
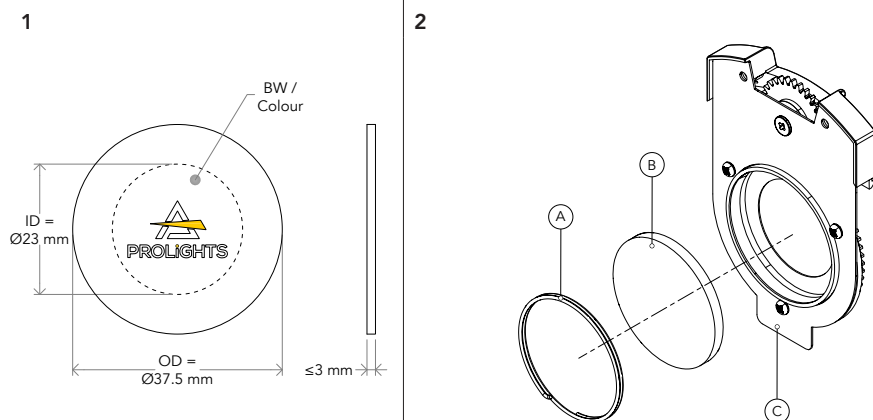
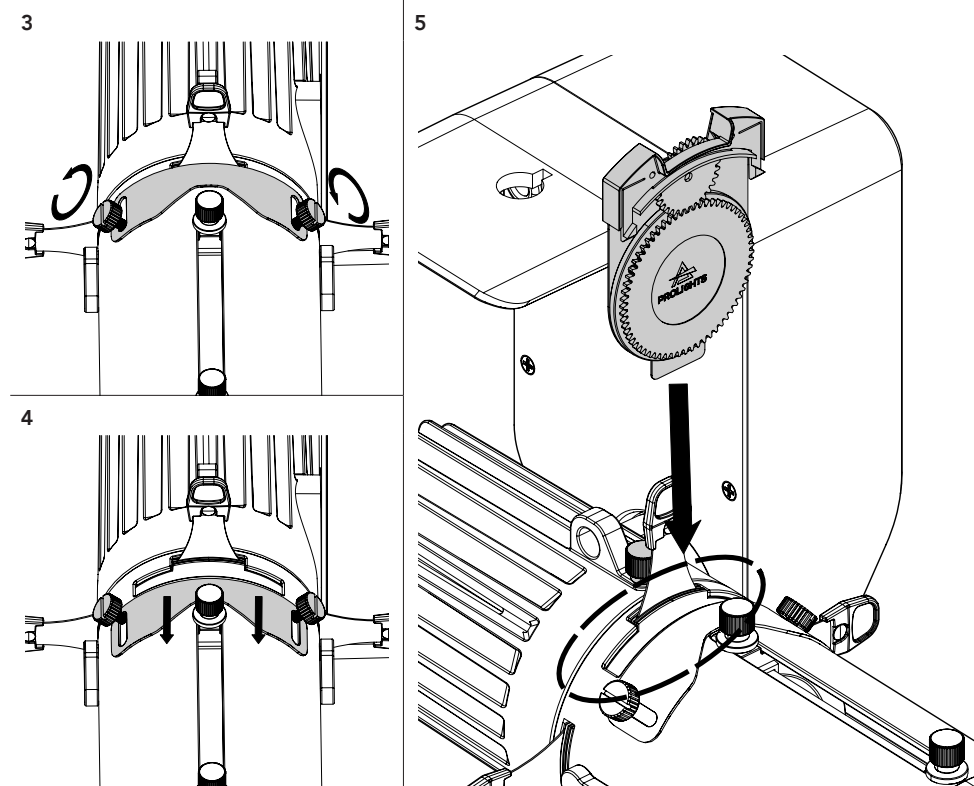


Fig. 12

GOBO HOLDER (CODE ECLDISPGOBOHIND - OPTIONAL)



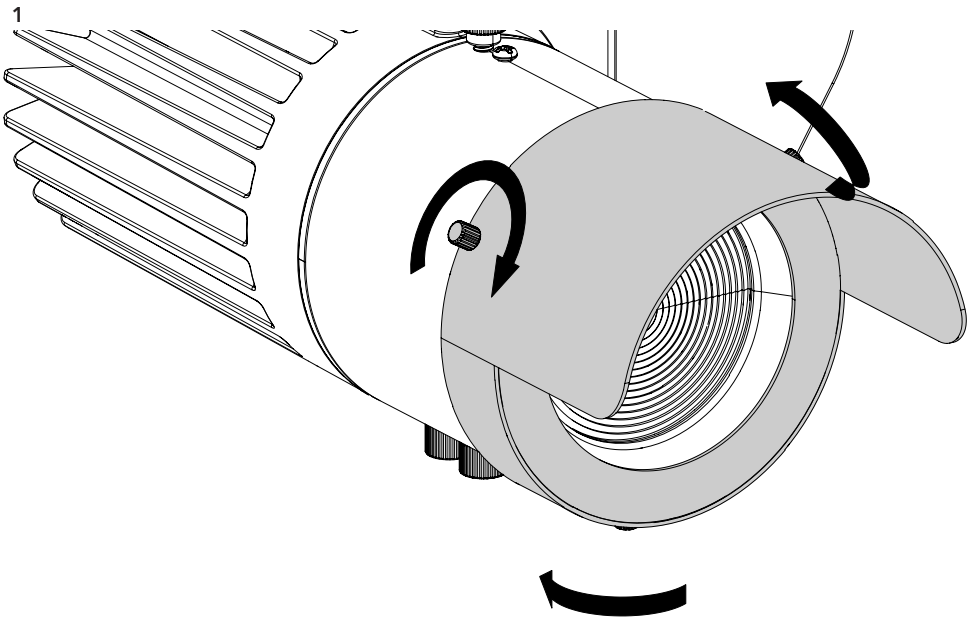
To mount the gobo remove the spring (1) from the gobo holder. Then insert the gobo following the sequence of image 2.



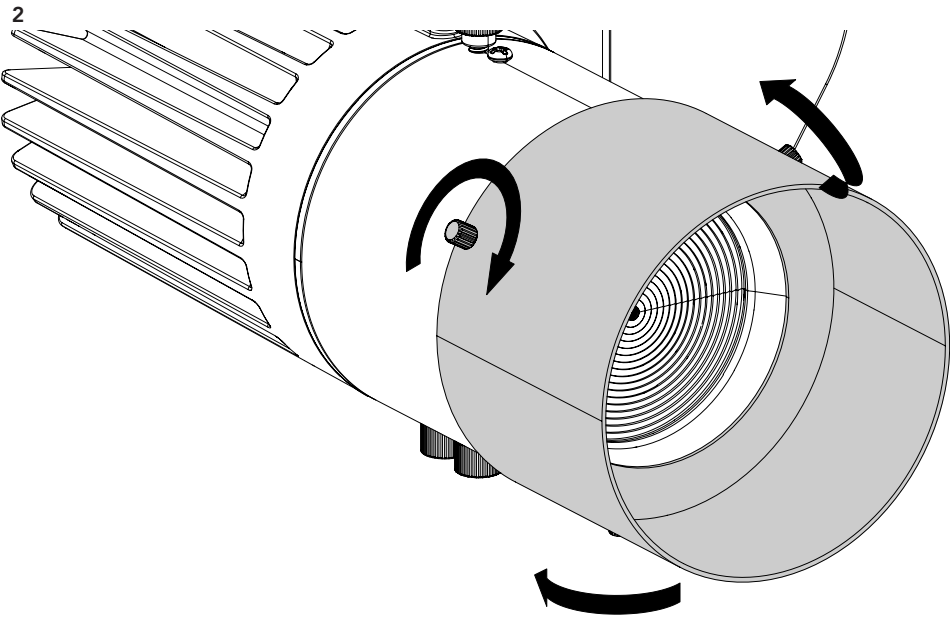
Loosen the two marked knobs of the optic (3). Then move the cover plate (4). Insert the gobo holder into the slot provided on the optic (5).

Fig. 13

HALF SNOOT, FULL SNOOT (CODES ECLDISPHSNOOT, ECLDISPFSNOOT - OPTIONAL)



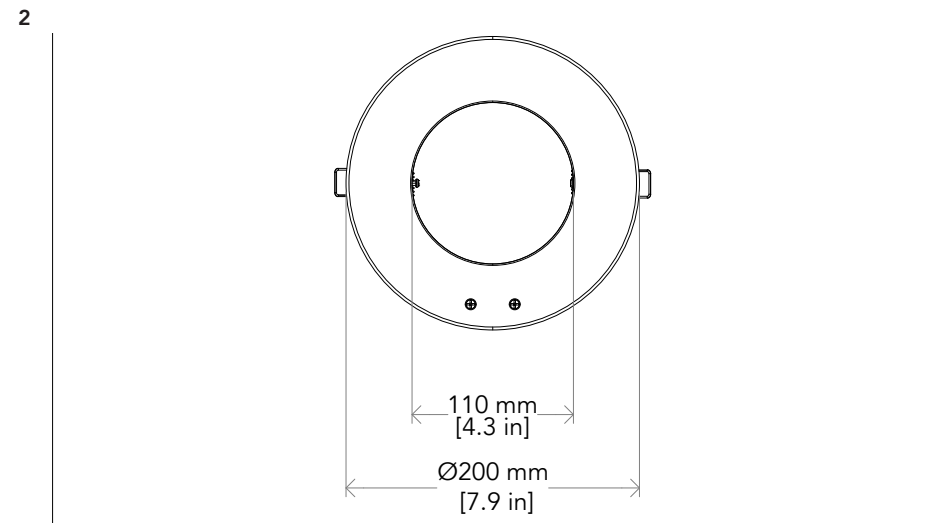
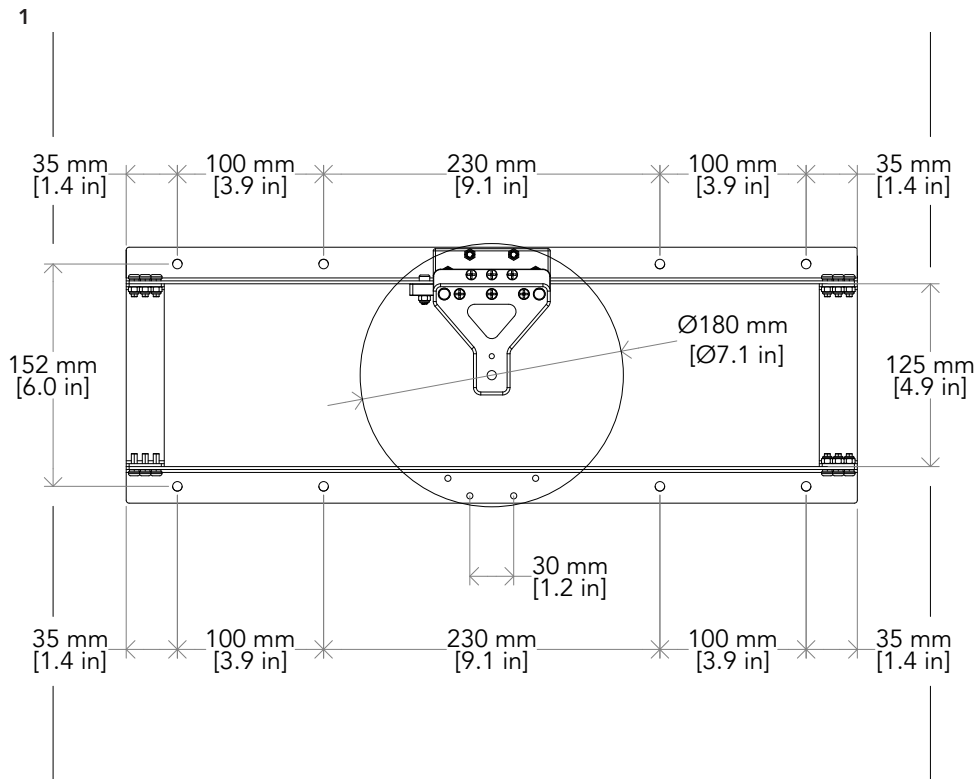
Loosen the three marked knob. Insert the half snoot on the optic and tighten the knobs in the egraved ring.



Loosen the three marked knob. Insert the full snoot on the optic and tighten the knobs in the egraved ring.

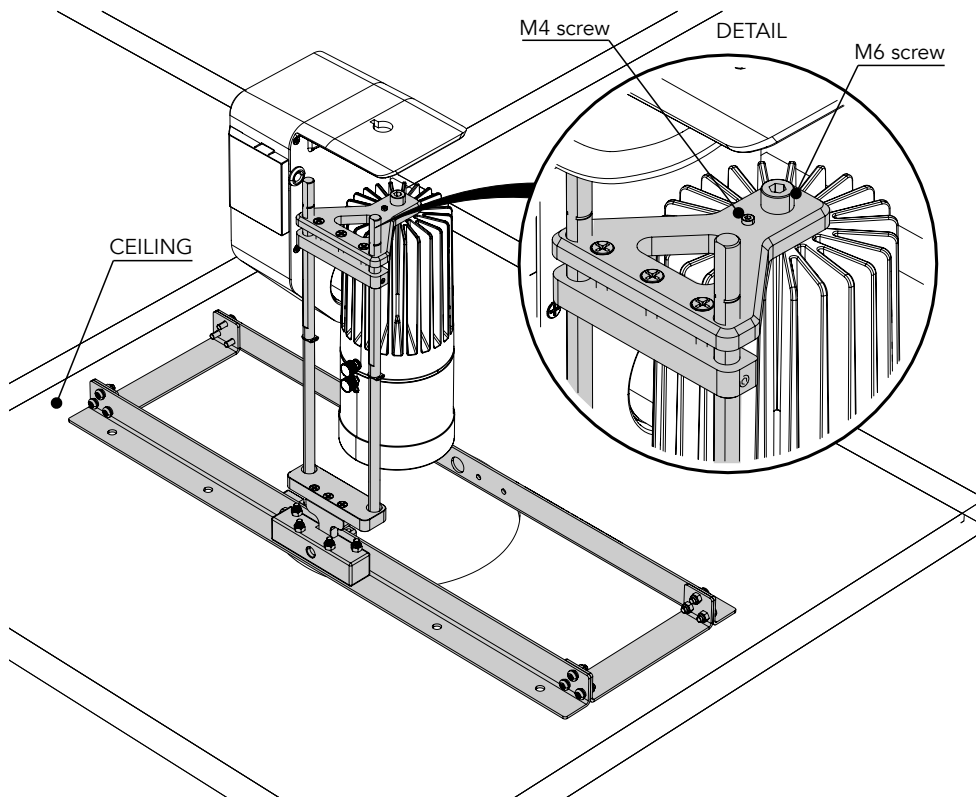
Fig. 14

CEILING ADAPTER KIT (CODES ECLDISPCEILKIT, ECLDISPCEILFLG - OPTIONAL)

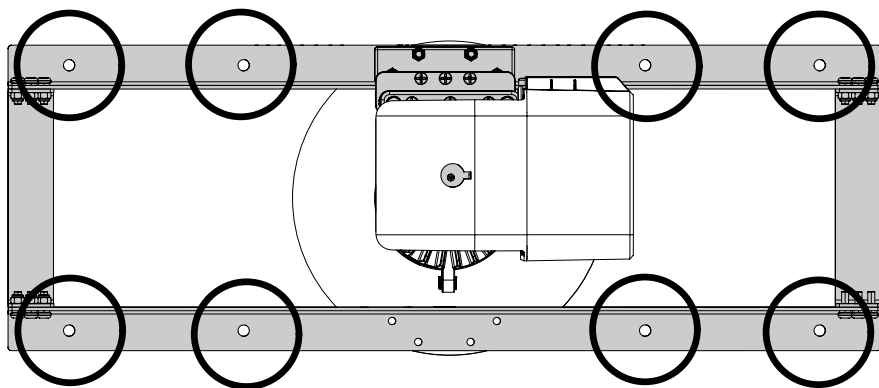


Measurements for cuts on the panels (1) and of the ECLDISPCEILFLG (2).

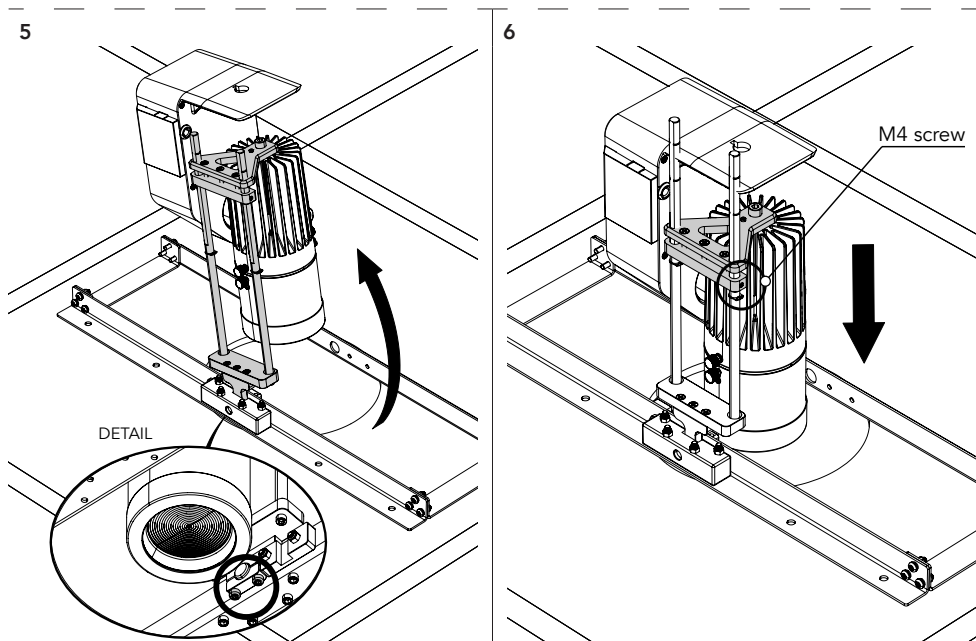
3



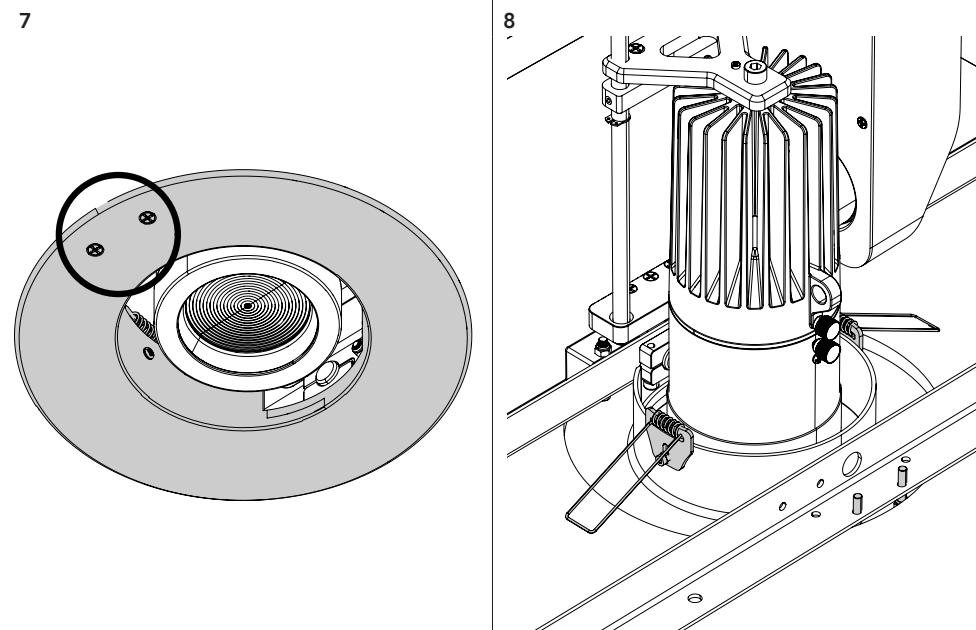
4



Mount the marked ceiling adapter kit on the ceiling by tightening the screws in the marked points (4). Fit the M6 screw to fix the projector (placed upside down) in the holes provided in the back housing (see detail). Fit the M4 screw to lock rotation.



The projector can be tilted with a range of tilt movement of $-15^{\circ} + 15^{\circ}$ (5). Tighten the two screws (see "DETAIL") to lock the tilt movement. It is possible to decide the positioning height of the projector by using the marked plate (6). Tighten the M4 screw (6) to lock the vertical movement of the plate.



Mount the flange tightening the two marked screws (7) to complete the ceiling adapter kit.

Fig. 15

12 - MAINTENANCE

MAINTENANCE AND CLEANING THE PRODUCT

WARNING: Disconnect from the mains before starting any maintenance work

It is recommended to clean the front at regular intervals, from impurities caused by dust, smoke, or other particles to ensure that the light is radiated at maximum brightness.

- For cleaning, disconnect the main plug from the socket. Use a soft, clean cloth moistened with a mild detergent. Then carefully wipe the part dry. For cleaning other housing parts use only a soft, clean cloth. Never use a liquid, it might penetrate the unit and cause damage to it.
- The user must clean the product periodically to maintain optimum performance and cooling.
- The frequency of such maintenance operations is to be performed according to various factors, such as the amount of the use and the condition of the installation environment (air humidity, presence of dust, salinity, etc.). It is recommended that the product is subject to annual service by a qualified technician for special maintenance involving at least the following procedures:
- General cleaning of internal parts.
- For all the parts subject to friction, using lubricants specifically supplied by PROLIGHTS.
- General visual check of the internal components, cabling, mechanical parts, etc.
- Electrical, photometric and functional checks; eventual repairs.
- Cleaning the lenses. Only use neutral soap and water to clean the lenses, then dry it carefully with a soft, non-abrasive cloth.

WARNING: the use of alcohol or any other detergent could damage the lenses.

- All other service operations on the product must be carried out by PROLIGHTS, its approved service agents or trained and qualified personnel.
- It is PROLIGHTS policy to apply the strictest possible calibration procedures and use the best quality materials available to ensure optimum performance and the longest possible component lifetimes. However, optical components are subject to wear and tear over the life of the product, resulting in gradual changes in colours over many thousands of hours of use. The extent of wear and tear depends heavily on operating conditions and environment, so it is impossible to specify precisely whether and to what extent performance will be affected. However, you may eventually need to replace optical components if their characteristics are affected by wear and tear after an extended period of use and if you require fixtures to perform within very precise optical and colour parameters.
- Do not apply filters, lenses or other materials on lenses or other optical components. Use only accessories approved by PROLIGHTS.

VISUAL CHECK OF PRODUCT HOUSING

- The parts of the product cover/housing should be checked for eventual damages and breaking start at least every two months. In addition, especially the parts of the front lens holder have to be checked mechanically (by means of movement by the part) if it is firmly fastened to the fixture. If hint of a crack is found on some plastic part, do not use the product until the damaged part will be replaced.
- Cracks or another damages of the cover/housing parts can be caused by the product transportation or manipulation and also ageing process may influence materials.
- This checking is necessary for both fixed installations and preparing product for renting. Any free moving parts inside of the product, cracked cover/housing or any part of front lens not sitting properly in place need to be immediately replaced.

TROUBLESHOOTING

Problems	Possible causes	Checks and remedies
Product doesn't power ON	<ul style="list-style-type: none"> No power to the product 	<ul style="list-style-type: none"> Check that power is switched ON and cables are plugged in.
Product reset correctly but does not respond correctly to the controller.	<ul style="list-style-type: none"> Bad signal connection 	<ul style="list-style-type: none"> Inspect connections and cables. Fix eventual bad connections. Repair or replace damaged cables.
	<ul style="list-style-type: none"> Signal connection not terminated 	<ul style="list-style-type: none"> Insert DMX termination plug in signal output socket of the last product on the signal line.
	<ul style="list-style-type: none"> Incorrect addressing of the product 	<ul style="list-style-type: none"> Check the product address and control settings
	<ul style="list-style-type: none"> One of the product is defective and is corrupting the signal transmission on the signal line 	<ul style="list-style-type: none"> Unplug the XLR in and out connectors and connect them directly together to bypass one product at a time until normal operation is regained. Once found the error, have that fixture serviced by a qualified technician.
Timeout error after fixture reset.	<ul style="list-style-type: none"> One or more hardware components requires mechanical adjustments 	<ul style="list-style-type: none"> Check product stored error messages for more information. Contact PROLIGHTS Service or an authorized service partner.
Mechanical effect loses position	<ul style="list-style-type: none"> Mechanical hardware require cleaning, adjustment or lubrication 	<ul style="list-style-type: none"> Check product stored error messages for more information. Contact PROLIGHTS Service or an authorized service partner.
Light output turn OFF Intermittently	<ul style="list-style-type: none"> Fixture is too hot 	<ul style="list-style-type: none"> Check product stored error messages. Allow product to cool. Clean the product and airflow filters. Reduce ambient temperature.
	<ul style="list-style-type: none"> Hardware failure (temperature sensor, fans, Light source...) 	<ul style="list-style-type: none"> Check product stored error messages for more information. Contact. PROLIGHTS Service or an authorized service partner.
General low light intensity	<ul style="list-style-type: none"> Dirty lens assembly 	<ul style="list-style-type: none"> Clean the fixture regularly.
	<ul style="list-style-type: none"> Dirty or damaged filters 	<ul style="list-style-type: none"> Install lens assembly properly.

Contact an authorized service center in case of technical problems or not reported in the table can not be resolved by the procedure given in the table.

Note

Note

