

# PICO TRAC

Low voltage lighting track system



## Safety Instructions

Please read the instructions carefully and save it for future reference

**Location.** IP20. Only for indoor use. Do not install in wet or damp locations. Do not install the track where exposed bare connectors/conductors can be shorted or contact any conductive/combustible materials.

**Driver.** The power supply should be 12V DC and short-circuit protected. Do not exceed the maximum rated amps for the track. Do not exceed 12V at the first lamp or exceed the maximum rated wattage of the transformer. Recommended total load is 80% of driver rating.

**Dimming.** Track is not dimmable.

**Installation / length.** For wiring use one pair of 0,65–0,75 mm<sup>2</sup> copper wires. Too long wire runs can produce a significant voltage drop resulting in fixtures not functioning. Recommended maximum length of wire and track is 6 meters.

**Fixtures.** All Pico Trac fixtures can be mounted on either High or Low track. All fixtures have individual dimmers. For removal of fixtures, please use Pico Stick-tool.

**Tracks.** Comes in pre-cut lengths from factory. Pico Tracs are not field cuttable.

## Technical

Article numbers

Material

Finish

Type

Protection class

Operating voltage

Length

PTL-1/2/3

PTH-1/2/3

Extruded aluminium

Conductors of copper

Grey

Matte Black

Matte White

One circuit 12V DC

IP20

12V DC

200–3000 mm

## LV Rating

Pico Trac Low

Pico Trac High

12V DC max. 5A

12V DC max. 10A

Low



High



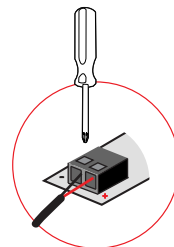
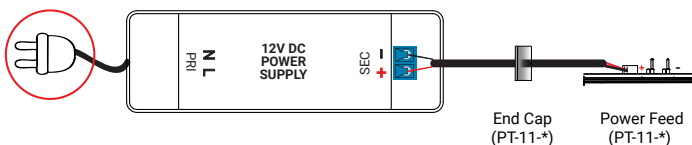
Cover



## Electrical installation

Connect a cable from the 12V DC Power Supply to the Pico Trac Power Feed. Gently push down the spring clamp terminal on the Power Feed.

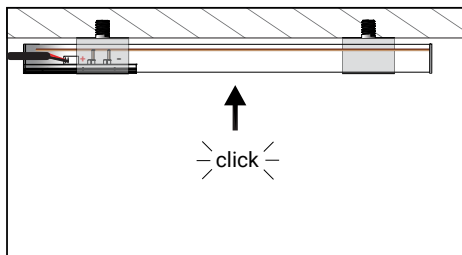
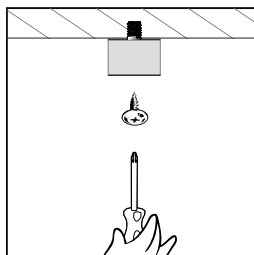
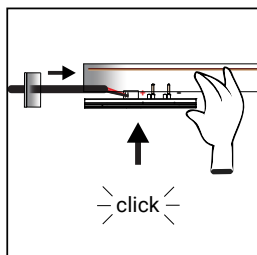
**SAFETY!** Please switch off mains supply before wiring.



## Mounting

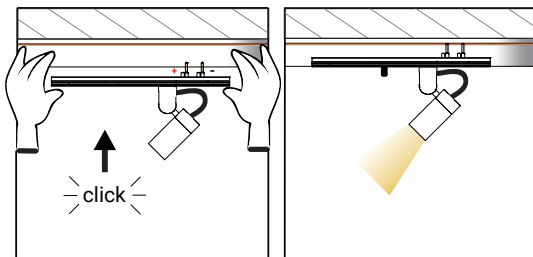
Power feed / End cap

For fixing the track, use the supplied clips. At least one clip per meter is recommended.



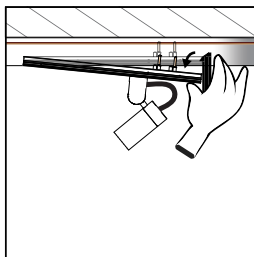
## Fixture Mounting

Pico Trac fixture are **polarity dependent** (if it doesn't lit, try flip it over).



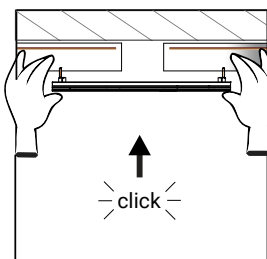
## Fixture Removal

Remove fixtures by using Pico Stick-tool.



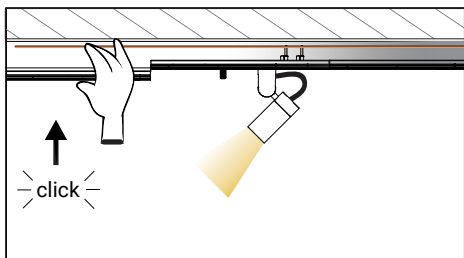
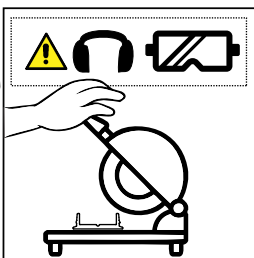
## Straight Joiner

Connect two tracks.



## Cover

Use the included cover to create seamless installations. Cut by using a miter saw.



## Accessory list, spare parts

PT-11-1	PicoTrac Power Feed, Grey
PT-11-2	PicoTrac Power Feed, Black
PT-11-3	PicoTrac Power Feed, White
PT-11	PicoTrac Power Feed, only PCB
PT-14-1	PicoTrac Straight Joiner, Grey
PT-14-2	PicoTrac Straight Joiner, Black
PT-14-3	PicoTrac Straight Joiner, White
PT-STICK	PicoStick, fixture removal tool
LPC-1	Extra Cover for Pico Trac Low/High, Grey
LPC-2	Extra Cover for Pico Trac Low/High, Black
LPC-3	Extra Cover for Pico Trac Low/High, White
PT-41-1	End Cap Pico Trac Low, Grey
PT-41-2	End Cap Pico Trac Low, Black
PT-41-3	End Cap Pico Trac Low, White
GIZ-A512B-1	End Cap Pico Trac High, Grey
GIZ-A512B-2	End Cap Pico Trac High, Black
GIZ-A512B-3	End Cap Pico Trac High, White
LFL-12-1	Mounting Clips, Pico Trac Low, Grey
LFL-12-2	Mounting Clips, Pico Trac Low, Black
LFL-12-3	Mounting Clips, Pico Trac Low, White
LFH-12-1	Mounting Clips, Pico Trac High, Grey
LFH-12-2	Mounting Clips, Pico Trac High, Black
LFH-12-3	Mounting Clips, Pico Trac High, White

## Power supplies, cables and tools

SNP15-12VL	Power Supply, 12V 15W, 1,25A	123 x 44 x 20 mm
SNP30-12VF	Power Supply, 12V 30W, 2,5A	160 x 58 x 18 mm
SNP75-12VL-E	Power Supply, 12V 70W, 5,83A	170 x 45 x 29 mm
SNP100-12VL	Power Supply, 12V 100W, 8,3A	180 x 59 x 32 mm
SNP150-12VL	Power Supply, 12V 132W, 11,0A	180 x 59 x 32 mm
SKX-2	Power Cord 2x0,75, Black	2m, FI
SKX-3	Power Cord 2x0,75, White	2m, FI
SKX075-2	Cable SKX 2*0,75, Oval, Black	
SKX075-3	Cable SKX 2*0,75, Oval, White	
H03VV-F-2	Cable SKK 2*0,75, Round, Black	
H03VV-F-3	Cable SKK 2*0,75, Round, White	
EP065-1	Elcuflex, Grey	2X0,65 Elcuflex FM
EP065-3	Elcuflex, Black	2X0,65 Elcuflex FM
LT2X075	RKUB Red/Black	2X0,75 mm2,
LT2X10	RKUB Red/Black	2X1,0 mm2
KGS80	Proxxon KGS 80	Cut off / Mitre saw
1501090	Saw Blade	Spare Saw Blade, Tungsten 80x1,6